

Excel Networking: A Sustainable Solution

Leading the Way in Sustainable Infrastructure Solutions

Excel is a world-class premium performing end-to-end infrastructure solution - designed, manufactured, supported and delivered - without compromise.

www.excel-networking.com/sustainability

excel
without compromise.



Our Commitment to Sustainability

Excel Networking Solutions is committed to leading the way in sustainable business practices.

As a leading provider of network infrastructure solutions, we recognise the importance of preserving our environment for future generations and we strive to align our efforts with global initiatives to achieve this.

Sustainability isn't just a goal – it's a responsibility, embedded in every decision we make.

We are proud to share some key initiatives that reflect our commitment to innovation, environmental responsibility, and positive impact. These actions demonstrate how we're driving meaningful change across our operations, fostering partnerships, and contributing to a more sustainable future.

Ecovadis Verified: Silver



We currently hold the Ecovadis Silver rating. This globally recognised platform assesses businesses' sustainability based on environmental impact, labour, human rights standards, ethics and procurement practices.

Cable Reels



We sell millions of metres of cable each year, many of which are shipped out on wooden reels. Where we can, we are collecting and reusing these reels – to date this has seen a reduction of 50,542 kgs of plywood and 83 tonnes of CO₂ per year.

Energy Management System (EMS)

We added an EMS system to help us understand our energy usage within the business by pinpointing high energy usages and unusual activity.

We are currently evaluating our options for onsite generation and power purchase agreements (PPA) to source 100% renewable electricity for sites where we have direct control over the supply arrangements.

In 2023 we upgraded our air conditioning/heating system meaning that we use no gas in our HQ offices and Environ House warehouse.



FSC Certification

Our card and paper packaging materials are made from FSC recyclable materials and are 100% recyclable.

Logistics Automation



At our Birmingham HQ warehouse we have invested in Autostore which includes 14 Maybot robots where a substantial amount of Excel products is stored and dispatched. The Autostore is far more energy efficient and has seen a significant reduction in the power from our previous leanlift solution.

Lighting

We use LED lighting throughout our offices and warehouses which automatically switch on and off dependent on the movement within each area.

Electric Car Fleet and Charging Stations



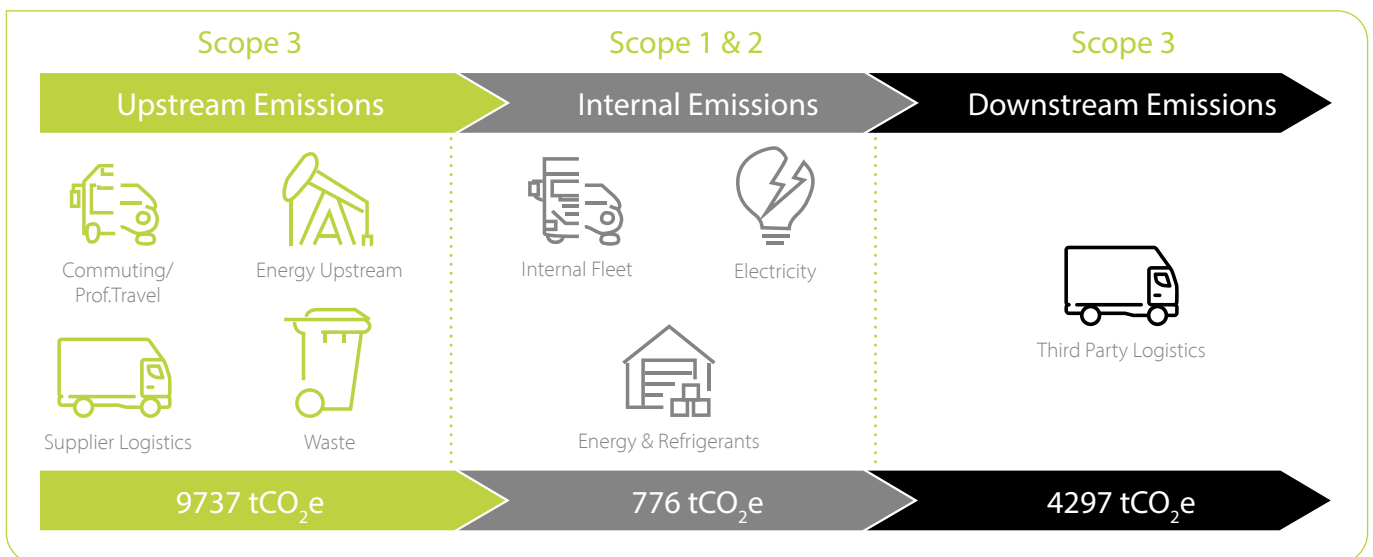
Our associates are encouraged to drive electric and hybrid vehicles. We have electric charging stations at our HQ and Environ House warehouse in Birmingham.

Collaborating with our associates, partners, and customers, we are shaping a future that prioritises respect, environmental stewardship, and meaningful progress.



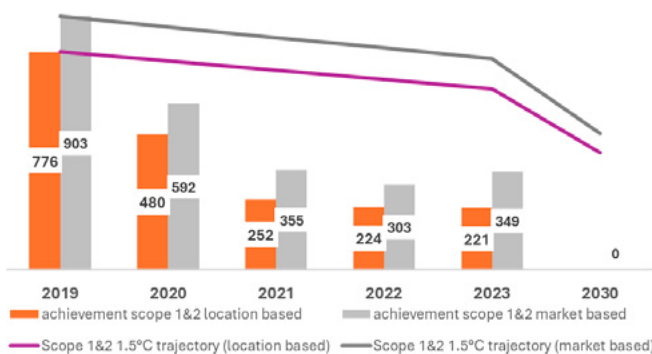
Reducing our Carbon Footprint

As a business we are looking at Scopes 1, 2 and 3 which categorises the different kinds of carbon emissions a company creates in its own operations and in the wider supply chain.



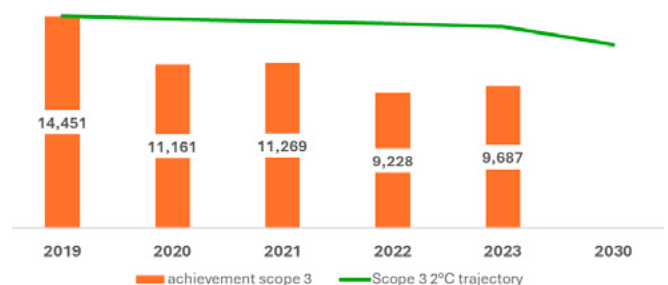
Scope 1 & 2

For Scope 1 & 2, our target is aligned to the 1.5°C pathway. By 2030, we aim to have reduced our Scope 1 & 2 emissions by 46% against a 2019 baseline. Since our 2019 benchmark year, we have made excellent progress and already exceeded Paris Agreement Targets, delivering a 71% (location based) reduction in 2023 compared against the 2019 baseline.



Scope 3

We have aligned our Scope 3 to the 2°C temperature pathway. This means that by 2030, we aim to have reduced our Scope 3 emissions by 13.5% against a 2019 baseline. Since our 2019 benchmark year, we have made excellent progress and already exceeded Paris Agreement Targets, delivering a 33% reduction in 2023 compared against the 2019 baseline.





Comprehensive Environmental Policies

The Excel brand is owned by Mayflex, part of the Sonepar Group, and therefore falls under the Mayflex Environmental Management System, ISO 14001:2015. This environmental policy reflects our deep commitment to preserving natural resources and minimising the ecological impact of our operations.

Our policies are designed to address critical environmental challenges and focus on:

- 1. Energy Efficiency:** Actively reducing energy consumption across all operations by implementing advanced energy management systems and renewable energy solutions.
- 2. Waste Reduction:** Minimising waste generation through better resource management, recycling programs, and sustainable product design.
- 3. Carbon Footprint Mitigation:** Identifying opportunities to lower greenhouse gas emissions throughout our value chain, from sourcing to product delivery.

Continuous Improvement

Environmental policies aren't static; they evolve as new challenges and technologies emerge. To stay ahead, we:

- Conduct regular internal and third-party audits to assess environmental performance.
- Use data-driven insights to fine-tune our policies and practices.
- Engage employees at all levels to create a culture of sustainability, offering training and incentives to encourage eco-friendly behaviours.

The Broader Impact

Our adherence to stringent environmental policies doesn't just benefit the planet - it also adds value for our stakeholders. By prioritising sustainability, we help customers meet their environmental objectives, improve operational efficiency, and enhance our reputation as an industry leader.



View Online



mayflex.com/sites/default/files/2024-02/ISO14001_23042027.pdf

Our adoption of the ISO 14001:2015 Environmental Management System standard ensures a structured and proactive approach to sustainability.

This globally recognised certification is a testament to our dedication to setting, achieving, and exceeding environmental goals.

At Excel, environmental responsibility is more than compliance - it's a core value that drives every decision.

Pioneering Plastic-Free Packaging

Plastic pollution is a global crisis, with millions of tonnes of plastic waste entering our ecosystems every year. Recognising this, Excel was the first in the industry to launch their 100% plastic-free product packaging initiative in 2019.

Eliminating plastic from the supply chain

Since switching to natural brown packaging options in 2019, we have removed over 104 million single-use plastic bags from the supply chain. This is equivalent to more than 258 tonnes of plastic waste being replaced with 100% recyclable packaging!

Saving time, reducing waste

Thanks to Excel's plastic free initiative, customers can save up to 60% of their preparation time and reduce their on-site waste when they're installing keystone jacks, as these products are available in multipacks of 24, supplied in a simple 100% recycled and recyclable cardboard tray as opposed to individual single-use plastic bags.





A Sustainable Product Portfolio

At Excel Networking, our products are not only designed to perform at the highest level but also with sustainability in mind.



Copper Solutions



Environ Rack Solutions



Enbeam Fibre Solutions



Power Solutions

Across our four core product areas—Copper, Fibre, Racks, and Power—we ensure that every solution contributes to a more sustainable future.

Copper and Enbeam Fibre Solutions

At the core of Excel Networking's product portfolio are our copper cabling solutions and Enbeam fibre systems, engineered for both high performance and environmental responsibility. These solutions are designed to meet the connectivity demands of today while supporting the sustainability goals of tomorrow.

Environmental Product Declaration (EPD)

Key part codes within our copper and fibre portfolios come with EPD certification, providing transparency about their environmental impact and empowering our customers to make sustainable choices.

CPR Compliance

Fully compliant with the EU's Construction Products Regulation, ensuring that all cabling solutions meet rigorous fire safety and environmental standards.

TM65 Embodied Carbon Certification

Demonstrates our commitment to reducing embodied carbon, highlighting the sustainable design and material efficiency of our copper and fibre offerings.

Pre-Terminated Assemblies

Our Specialist Support Services team provides pre-terminated copper and fibre assemblies that drastically reduce waste on-site and minimise product wastage.

[excel-networking.com/specialist-support-services](https://www.excel-networking.com/specialist-support-services)

Multipacks

Keystone jacks and patch leads are available in multipacks, and expert product management teams continue to work with the supply chain to reduce outer packaging sizes as much as possible.

Plastic-Free Tubes

We continue to make strides with 100% plastic-free tubes within key boxed cable product lines, further reducing single-use plastic consumption.

Mini Cat6 and Cat6A Patch Leads

Available with reduced-sized outer housings, these patch leads use less plastic, contributing to reduced material usage.

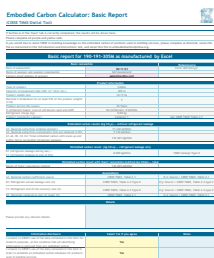


EPD Certification

We have produced EPDs for core products within the Excel product range, to help identify the most sustainable solutions for each requirement. These detailed reports are created and ratified by an external third-party provider, bre.

An EPD is a document that quantifiably demonstrates the environmental impact of a product. An EPD is generated based on data obtained through Life Cycle Assessment (LCA). An LCA is performed using a peer-reviewed Product Category Rules document (PCR) in line with EN 15804 (the European Standard for the generation of EPD for construction products), ISO 14025 and other related international standards.

Each Excel EPD helps Specifiers, Architects, End Users and Designers to choose the most sustainable solution for each requirement.



Embodied Carbon Certification: TM65

We provide a CIBSE TM65 certificate for each of the Excel products in the range.

The TM65 certificate shows the embodied carbon for each product which documents the greenhouse gas emissions associated with the manufacture of the product, its installation, maintenance, repair, replacement and end of life and covers the whole life cycle, excluding operational aspects and potential recovery, reuse or recycling of materials.



Environ Racks and Cabinets

Excel's range of Environ racks and cabinets are meticulously designed to combine functionality, durability, and sustainability.

Built to withstand the demands of various applications, these products are engineered for longevity, reducing the need for replacements and minimising waste. The modular design ensures flexibility, allowing for easy reconfiguration and adaptation to evolving requirements.



Power Solutions

Excel's power management solutions deliver reliable energy distribution while prioritising environmental sustainability. With a comprehensive range of intelligent power distribution units (iPDUs) available, our solutions are tailored to optimise energy usage and reduce operational carbon footprints.



Choosing Excel helps Specifiers, Architects, End Users and Designers to achieve their sustainability targets.

A Warranty That Supports Sustainability

We are so confident in the reliability and longevity of our products that we offer a comprehensive 25-year warranty on all Excel products that have been installed by an accredited Excel partner.

This assurance reflects the durability and quality of our solutions, which are designed to remain fully operational for decades. By reducing the likelihood of replacements within this timeframe, our warranty aligns with our sustainability goals and helps customers reduce waste.

Find out more: [excel-networking.com/25-year-warranty](https://www.excel-networking.com/25-year-warranty)



Circularity: Closing the Loop

At Excel Networking, sustainability doesn't end with the sale of a product. By focusing on durability and recyclability, we design products that align with the principles of a circular economy.

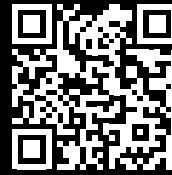
Together, we can reduce resource consumption, extend product life cycles, and create a more sustainable future.

Supporting customers in their sustainability journey

We strive to make being sustainable as simple as possible for our customers.

We provide Excel Partners with certificates quantifying their environmental contribution via our Plastic Free Packaging Calculator, alongside a tool for all Excel customers to be able to calculate how much plastic they could save by choosing Excel.

Plastic Free Calculator



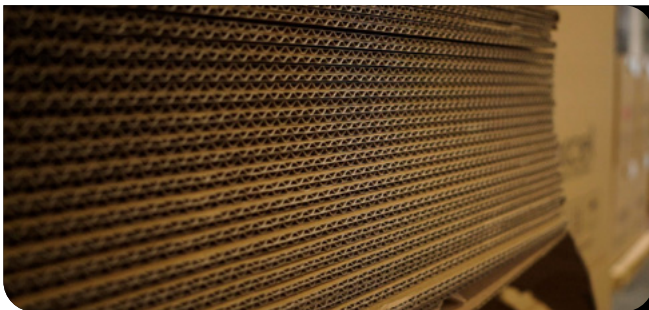
<https://excel-networking.com/plastic-free-packaging/calculator>

Plastic Free Certificates



<https://excel-networking.com/plastic-free-certificates/request-certificate>

Excel's sustainability efforts don't stop at product packaging. We have introduced a number of packaging-related initiatives to help eradicate the use of plastic from our supply chain as much as possible.



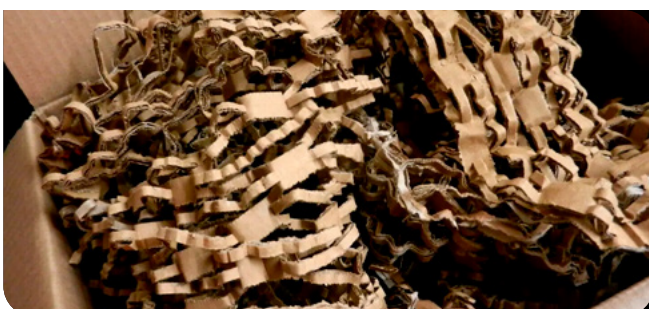
"Crash Lock" Cardboard Boxes

We use 'crash lock' boxes that remove the need to use paper tape to seal the boxes, making it quick and easy for customers to access their products with a simple tear-off strip. These boxes are made from 100% recycled card and are 100% recyclable. We use lineless labels on all FedEx shipments removing 100% of the plastic backing.



Recyclable Shrink Wrap

The shrink wrap, used to wrap and protect the Environ floor racks and wall boxes and to wrap boxes onto a pallet, is made from 30% recycled material and is 100% recyclable.



Recycled Void Filler

Where void filler is required, we re-purpose our waste cardboard and paper and turn it into void filler. Not only is it 100% recycled and recyclable it is also saving over 3,500kg of cardboard from our operation each year.

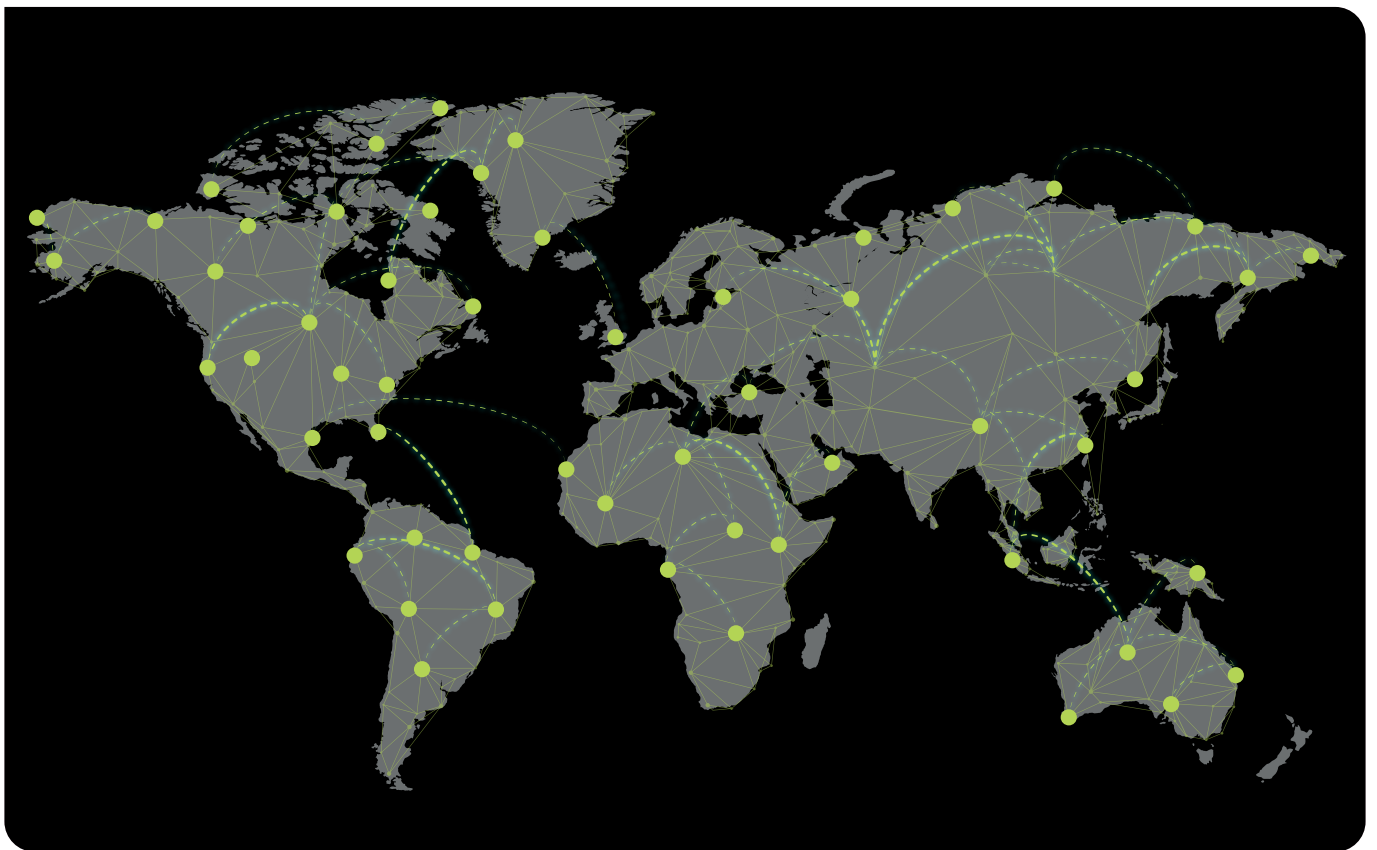


Expanding Globally, Acting Locally

With operations in over 80 countries, Excel combines global expertise with local initiatives to foster sustainability. Our worldwide presence allows us to deliver innovative networking solutions while tailoring our efforts to meet the unique needs of each region we serve.

In the UK and Middle East, Excel's logistics are expertly managed by Mayflex. Mayflex's focus on efficient logistics ensures timely deliveries while maintaining a strong commitment to minimising environmental impact.

Across Europe, our Excel Distribution Partners are strategically positioned to provide local support and expertise. By optimizing delivery routes and leveraging regional hubs, we reduce transportation emissions and ensure that our customers receive the highest level of service while aligning with sustainability objectives.



A Global Network with a Local Touch

At Excel, we understand that sustainability is a shared responsibility that transcends borders.

By blending global innovation with local action, we empower businesses around the world to build resilient, future-ready infrastructure solutions that put the protection of the environment at the forefront.

Together, we're shaping a sustainable future - one connection at a time.





European Headquarters

Excel House
Junction Six Industrial Park
Electric Avenue
Birmingham B6 7JJ
England

T: +44 (0)121 326 2475
E: iint@excel-networking.com

Middle East & Africa Headquarters

Office 22A/B
AU (Gold) Tower
Cluster I
Jumeirah Lake Towers (JLT)
Dubai
United Arab Emirates
PO Box 293695

T: +971 4 421 4352
E: mea_sales@mayflex.com



Certificate No. FS 547274



Certificate No. EMS 542863

